



Tooting Bec, London, SW17

BUTLER & STAG



Guide Price - £400,000 to £425,000

Situated just off St James Drive, between the sought-after hubs of Tooting Bec and Balham, this two-bedroom flat offers generous proportions, excellent transport links, and plenty of potential to create a stylish and modern home.



Leasehold

- Two Double Bedrooms
- Spacious Reception With Access To Private Balcony
- East-Facing Aspect With Good Natural Light
- Scope To Modernize And Add Value
- Close to Wandsworth Common
- Private Parking
- Close To Tooting & Balham Stations
- Chain Free

Located within a well-maintained ex-local authority block on St James Close, the property spans close to 700 sq ft (approx.) and benefits from a practical layout, with all rooms leading from a central hallway. The reception room is bright and well-sized, opening out onto a private east-facing balcony – a perfect spot for morning coffee or an evening wind-down.

The flat further comprises two double bedrooms, a separate kitchen, and a bathroom with separate WC. While the property requires cosmetic updating throughout, it presents an ideal blank canvas for buyers keen to put their own stamp on a spacious home in a highly desirable location.





St James Close

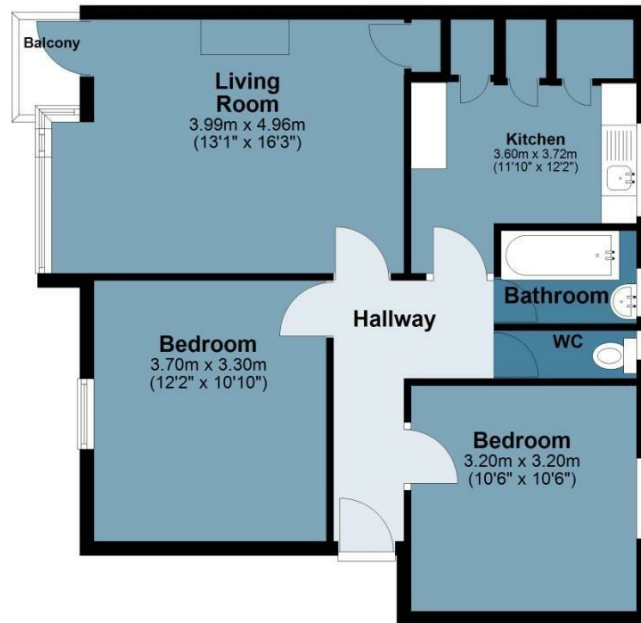
Approx. Gross Internal Area 63.9 Sq M (688.2 Sq Ft)

BUTLER & STAG



Second Floor

Approx. 63.9 sq. metres (688.2 sq. feet)



Measurements are approximate and for illustration purposes only. While we do not doubt the accuracy and completeness, we advise you conduct a careful independent assessment of the property to determine monetary value.
© @modephoto.uk www.modephoto.co.uk

BUTLER & STAG

☎ 020 8102 1236

🏠 508 Roman Road, Bow, London, E3 5LU

✉ bow@butlerandstag.com

www.butlerandstag.uk

IMPORTANT NOTICE - These particulars have been prepared in good faith and they are not intended to constitute part of an offer or contract. We have not performed a structural survey on this property and the services, appliances and specific fittings have not been tested. All photographs, measurements, floor plans and distances referred to are given as a guide and should not be relied upon.